

dop dop dop dop dop dop dop dop dop dop dop

dop

digital operator panel



the next generation

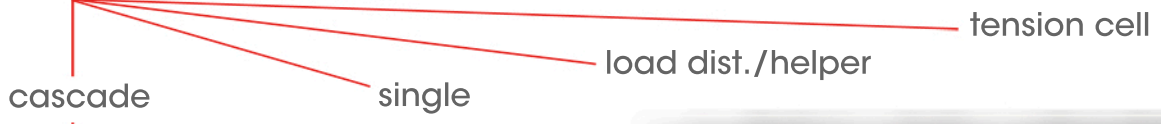
dop dop dop dop dop dop dop

dop-touch is the latest SAEL embedded system for Paper Mill applications. Tough and hard-wearing, dop-touch is a multifunction station made to drive and display motors, drives and more.

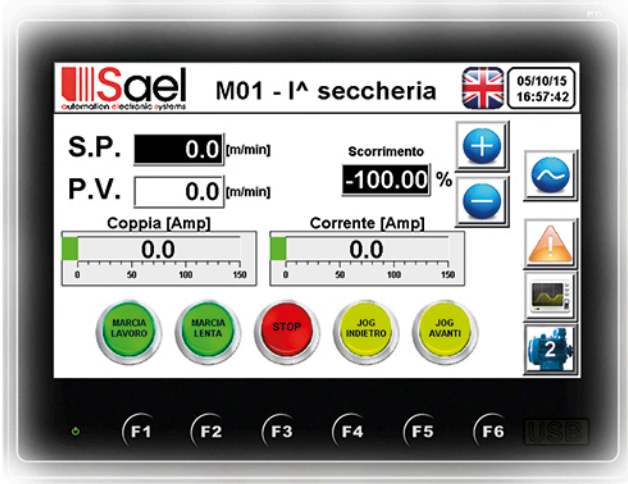
An easy way to set up and display any Drive parameter, getting all the inside variables as well.

Via software, dop-touch, controls the settings and the regulation of the Drive like: PID, Loads, Electrical shaft, Positionings and so on.

motopotentiometer



- display
- set point (speed)
- feedback (speed)
- nominal torque
- total current



Up to 3 motors controlled by one dop-touch station
 All the configurations can be stored on a USB key, and easily installed
 No programming actions are required
 dop-touch is a PLC S7 fully compatible device (via Ethernet)

display / input device interface	TFT LED LCD, 65535 colors, 7.0" (16:9) (800 x 480) Touch panel
cpu	3 serial port, Ethernet port 10-100Mb/s, 2 Usb port, 1 Miscro SD
system working memory	RISC 32 bit
flash memory	64MB
battery backup memory	8MB
input power	128KB
power consumption	24V dc
outlet dimensions	15W
cutout dimensions	188 (w) x 143,3 (h) x 29 (d) mm
weight	174,5 (w) x 132 (h) mm
	0,6Kg



dop-touch