

## The Paper Industry:

The paper production has **three key words: quality, efficiency, 24/24 continuous production.**

SAEL means a committed Team focused on innovative solutions development: from the revamping of the existing machines up to the brand new production lines. Custom and Flexible solutions for easier and quick installations: Systems and friendly user interfaces for any production stage.

A long experience over the years allows the full integration between the most popular branded components – Inverter, Converter, Plc – and the own Drives made by Sael.

**Those are our strengths, this is our value selling, this is**



customer talks and we listen



**Sael** s.r.l.  
via dei Genieri, 31  
36040 Torri di Quartesolo (VI)  
ITALY

tel +39 0444 582499 r.a.  
fax +39 0444 582262  
<http://www.sael.it>  
[commerciale@sael.it](mailto:commerciale@sael.it)

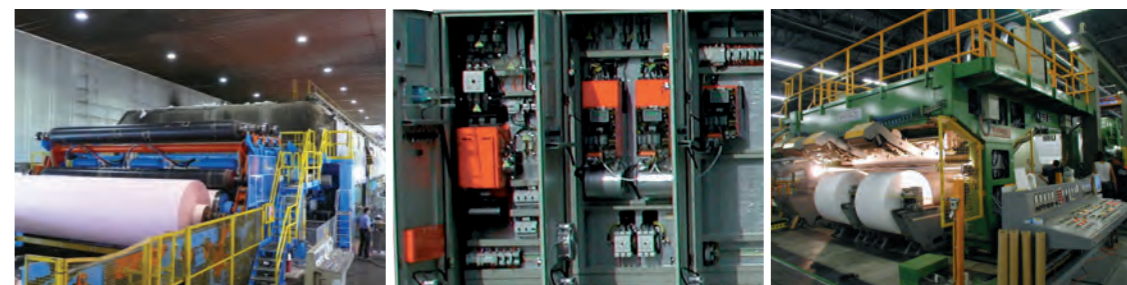
platformoneplatform  
platformoneplatform

## Voice of Customer:

I need the powerful and easiest drive to perform my machine • I need the most flexible platform ever • I need to quick restart after the stop • I need to be assisted at any time, day and night • I need to be more cost effective on spare parts • I need to share ideas and develop my machine with a competent Team • I need a real partner



the best answer to your needs



the spirit of improving

## PLATFORM ONE and ONE DRIVE

Customer First !

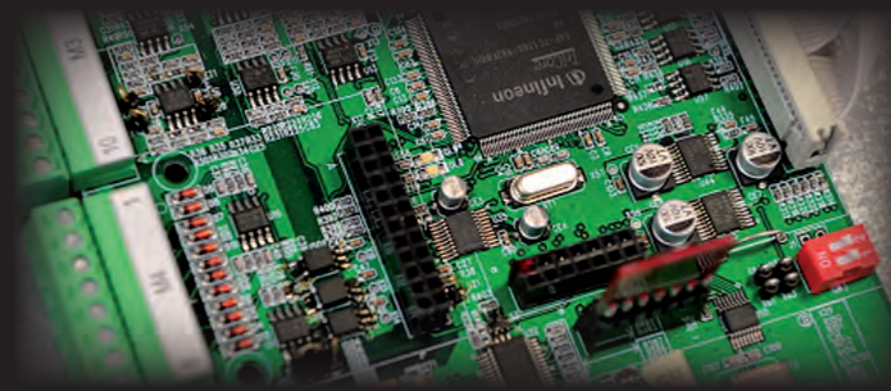
The new "PLATFORM ONE", exclusively made for paper industry, is the innovative and flexible solution ever.

Since 2011, and against the market trend, SAEL uses a single board to manage all the Drives: AC; DC; Chopper; Brushless and Reborn. The "ONE DRIVE" actually.

The customer benefits of one board as spare part for all the system only.

The substitution can be done within 3 minutes only. ONE has a flash memory card with all the information stored inside.

In case of a Drive fault the simple replacement of the device is required. Extract the Flash memory from the broken drive, plug into the new drive, and restart: no programming, no parameters, nothing else.



## ONE BOARD

Voice Of Customer !

"ONE" is the newest, latest and universal board for any type of existing Drive on the market and the AC, DC, REBORN, BLDC made by SAEL as well.

ONE is a multifunctional solution who dramatically reduces the maintenance spare parts cost. A single Board will be the unique component for all the Drives in your plant.

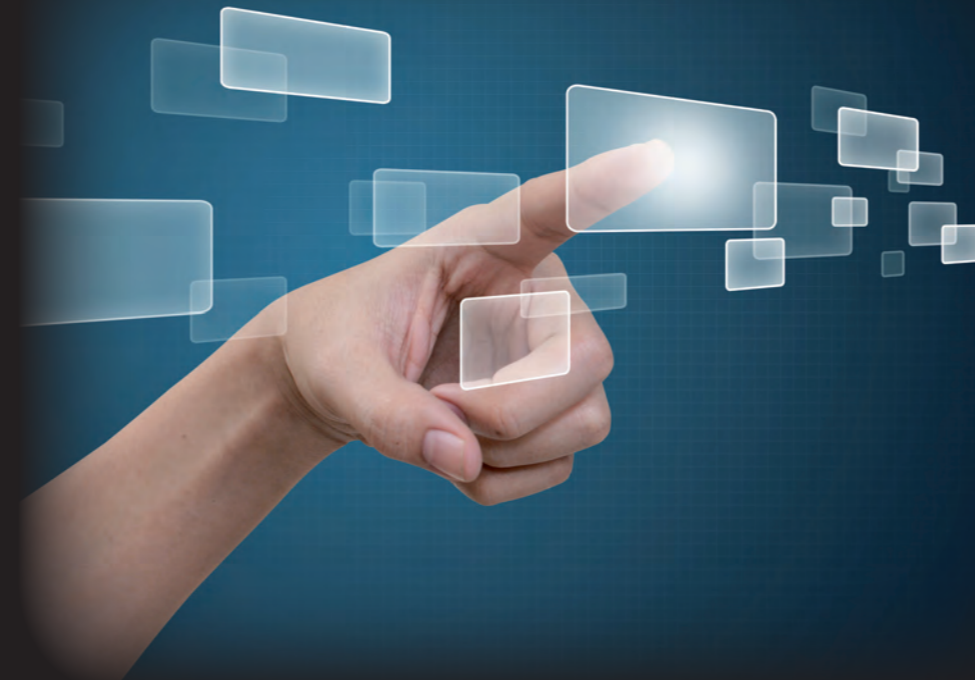
Main features:

- RISC 32 bit Processor with Flash-EEPROM software inside "One Platform®"
- I/O Communication set up
- 8 Settable DGT Input and 6 Settable DGT Output
- 4 Settable Analogical Input and 2 Settable Analogical Output
- 2 Settable Encoder Input (the 2nd as option)
- 2 Settable SERial Interfaces RS232 or RS485
- 2 CAN Bus for refs. and enablement w/o additional external board
- 1 ANYBUS to additional field bus (e.g.: Profibus, Ethercat, Others)

## DCS IN DRIVE

Art and Technology beside you !

The Supervisor in combination with the Engineering Station is a powerful control device. It allows a quick and easy management of each single working process by a direct operator engagement. The architecture is based on WINDOWS with driving programs on SCALINK and MMI-SCADA platforms: fully available to whom has the programming key. The complete package is completed by the remote assistance IWSA - Internet World Sael Assistance.



## ONE INVERTER

Customer Needs !

The Platform One is now completed by the new long life inverter series: ONE INVERTER. A Product designed to meet the mission of "last over time" as much as "repairable in every part": a huge gap from any Competitor else. Over 15 years availability. 400-500-690Vac / from 15 to 450kW (nominal power).

Main features:

- Film capacitors vs. traditional electrolytic - virtually infinite lifetime component -
- Just "ONE" control board for any power rating
- Faster replacement of the control board in case of failure - due to the removable EEPROM, no parameters are required -
- Performances improved by the newest Tri-Core processor
- AC motor parameters detection by the accurate identification algorithm
- Smart auto tuning: faster inverter set-up in three steps
- Maximum 3 minutes for a replacement in case of failure. No skilled operators are required; and no programming steps as well



## REBORN and DC Drive

Less Waste means Savings !

The existing electrical equipments are getting older: the ordinary maintenance program is not enough and the spare parts are not available.

But you are demanding reliability and long life devices.

You pushed to look for a solution, and here we are! REBORN: a new full digital "one" board regulation rack replaces the old main board already made by BMB®, SIEMENS®, ABB® e SCE®, etc. The Old and expansive power sections, main switches, distribution lines, SCR bridges, capacitors and fuses are kept. "REBORN", directly linked to the SCR bridge, provides a full digital system with double field bus vs. the original analogical or semi-digital drive.

A great benefit: Get the best technology higher performance at a competitive cost ever.

Beside REBORN we offer a huge DC DRIVE Range: 220-400-600Vdc up to 2000kW (as single unit), and no limits as multiple unit.